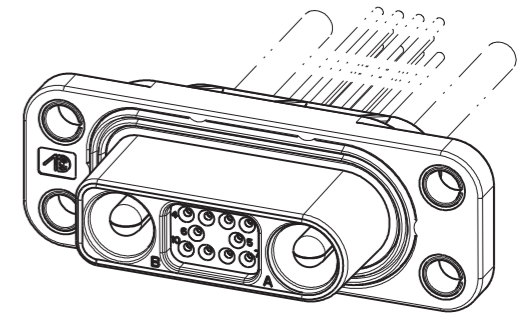
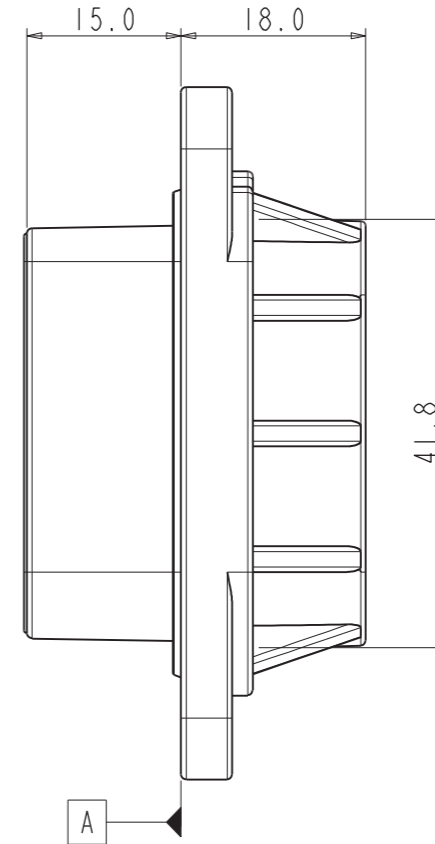
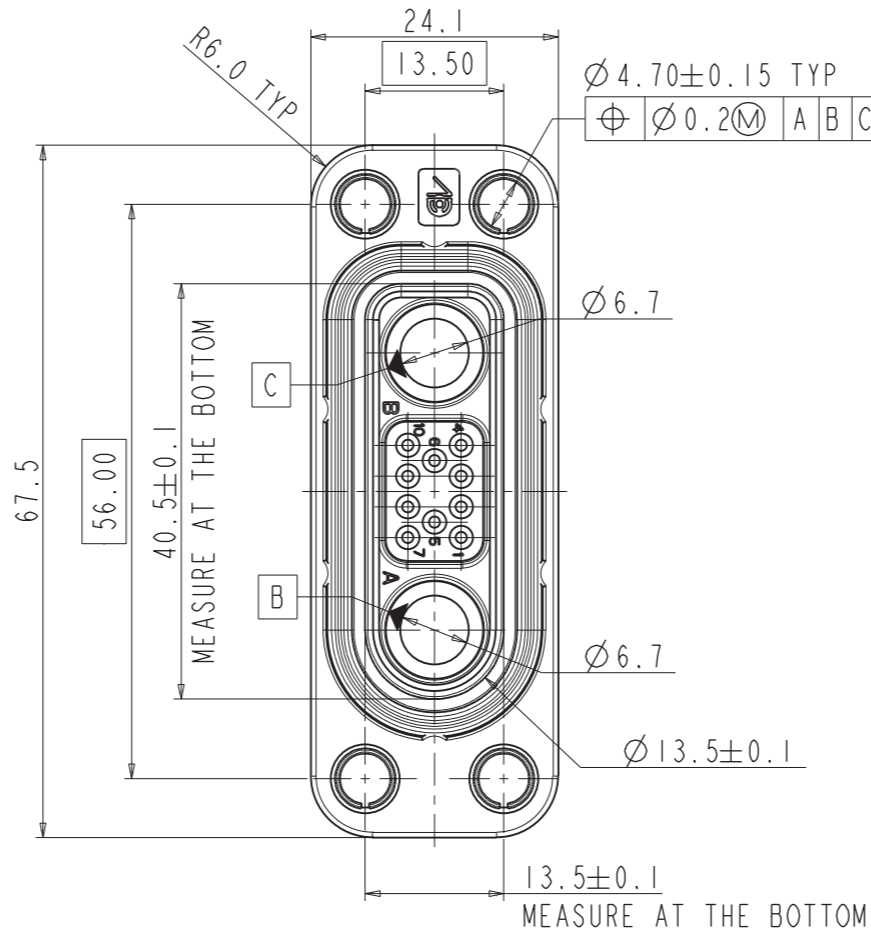
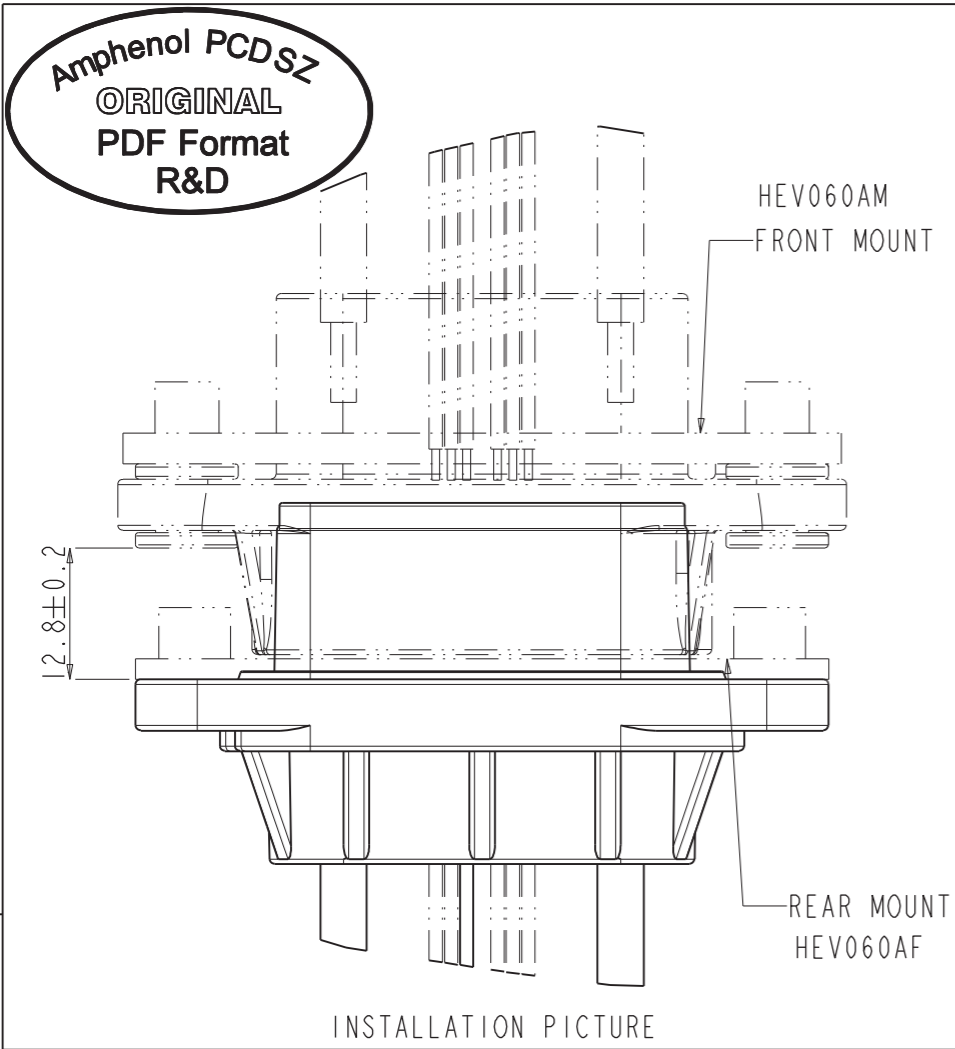


C-HEV060AF2P10SW

REV	ECN	DESCRIPTION	DATE	MODIFIED
1		RELEASE	Nov-27-20	



SCALE 1:1

C-HEV060AF2P10SW

C-HEV060AF2P10SW

TECHINCAL DATA		SPECIAL CHARACTERISTICS SYMBOL
VOLTAGE RATING	SIGNAL CONTACT 24V DC	✦
	POWER CONTACT 800V AC/DC	✦
WITHSTAND VOLTAGE	SIGNAL CONTACT 660V AC	✦
	POWER CONTACT 2600V AC	✦
INSULATION RESISTANCE	1000V/DC 200MΩ Min	✦
	SIGNAL CONTACT 1A	✦
CURRENT RATING	POWER CONTACT 40A(6mm ²) 60A(10mm ²)	✦
	WATER PRROF (MATED CONDITION)	IP67
SHIELDING	NO	NA
MAX MATING CYCLES	3000 TIMES	⊙
OPERRATING TEMPERATURE	-40-110°C	NA
AMBIENT TEMPERATURE	-40-55°C	NA

*NOTES:

- CONTACT SHOULD BE ORDERED SEPARATELY,DETAIL SEE RIGHT TABLE.
- WIRE RANGE: POWER: 6MM²-10MM².OD OF NO SHIELDED WIRE: ≤Ø 7.0mm.
SIGNAL: 0.35mm²; OD OF WIRE: Ø 1.1mm-Ø 1.75mm.
- ✦ 3.ROHS COMPLIANCE

- ✦ IS CRITICAL CHARACTERISTIC SYMBOL
⊙ IS IMPORTANT CHARACTERISTIC SYMBOL

APPLICATION:

POLLUTION DEGREE 2 / 污染等级 2
OVERVOLTAGE CATEGORY II / 过电压类别 II
INHOMOGENEOUS FIELD / 非均匀电场
ALTITUDE NO MORE THAN 2000M / 海拔不高于2000M

安费诺精密连接器(深圳)有限公司
Amphenol PCD Shenzhen

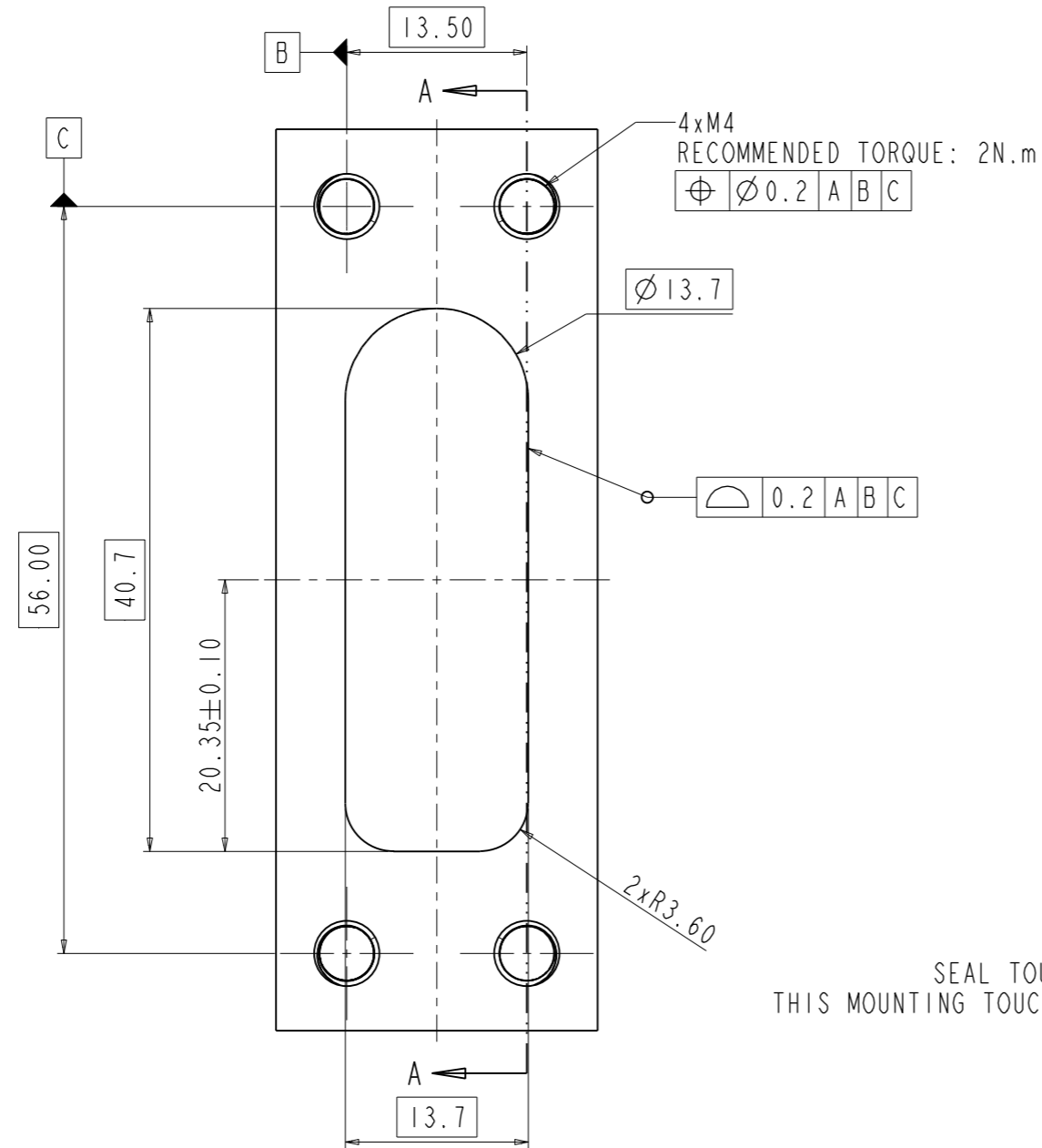
受控文件

2020年12月10日

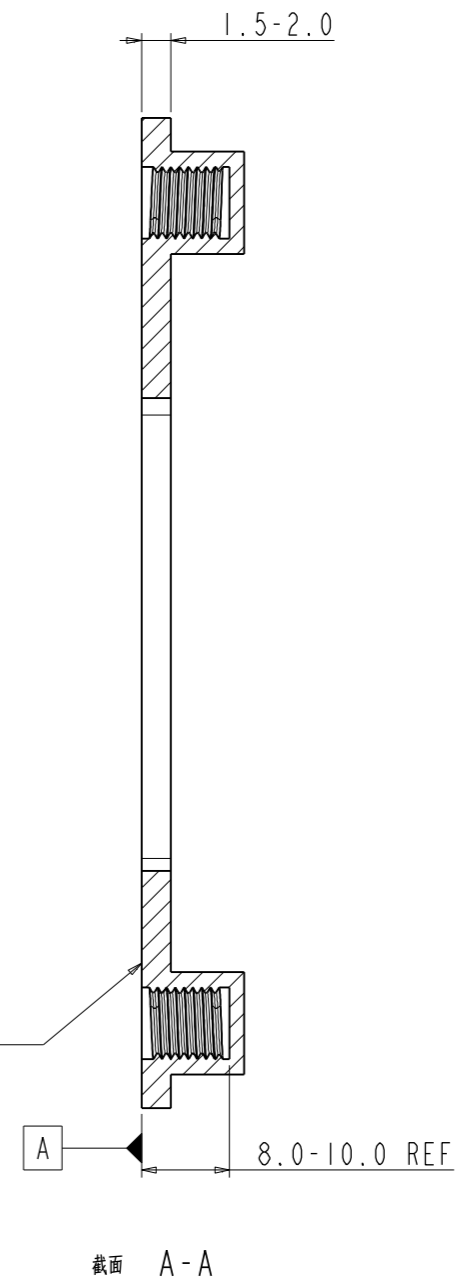
SEPARATELY ORDERING PARTS		
WIRE SIZE CHOOSE	POWER CONTACT (USAGE)	HVIL CONTACT (USAGE)
6&10mm ²	C3100235011 (2PCS)	P01BM00578 (10PCS)

DIMENSIONS	TOLERANCES	PROJECTION	TITLE		
ANSI Y14.5M UNITS: MM Pro/E FILE	.X ±0.5 .XX ±0.05 ANGLES ±2°		HEV060 SERIES 2POWER ADD 10SIGNALS RECEPTACLE		
ORIGINAL	THIS DOCUMENT CONTAINS PROPRIETARY INFORMATION WHICH IS THE CONFIDENTIAL PROPERTY OF Amphenol PCD Shenzhen Co. Ltd Amphenol PCD Shenzhen Co. Ltd RESERVES THE RIGHT TO CLARIFY THIS DRAWING		ENGR	DATE	REV
			CHKD	Jun-16-20	1
			APPD		
			SIZE	DWG NO.	
			A3	C-HEV060AF2P10SW	
			CODE: 58982	SCALE: 7:5	SHEET 1 OF 2

REAR MOUNTING PANEL RECOMMENDATION



SEAL TOUCH SURFACE $\sqrt{1.6}$, $\square:0.1$
THIS MOUNTING TOUCHED AREA SHOULD BE CLEAN



C-HEV060AF2P10SW

C-HEV060AF2P10SW

SIZE	DWG NO.	REV
A3	C-HEV060AF2P10SW	1
CODE: 58982	SCALE: 2:1	SHEET 2 OF 2