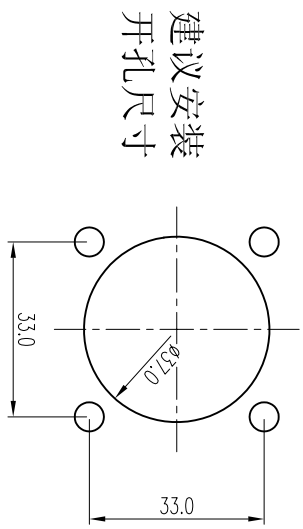
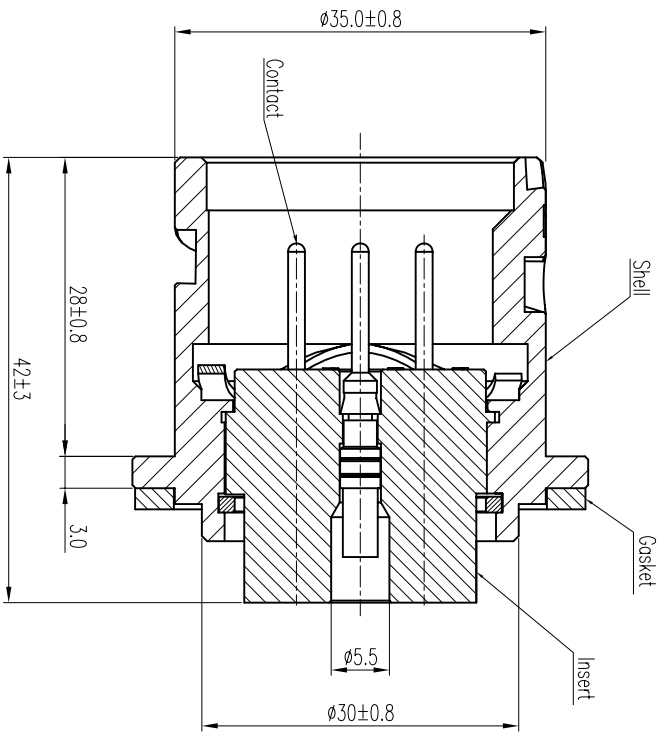
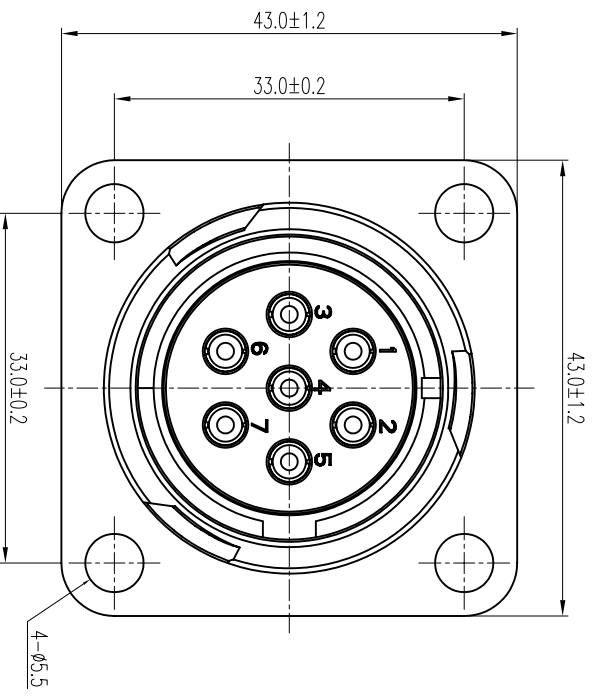


REV	ECN	DESCRIPTION	DATE	MODIFIED
1		PRE-RELEASE	2010.11.05	Thomas



Amphenol PCD SZ
ORIGINAL
PDF Format
24 Nov. 10R&D

***Notes:**

Material \ Finish
Shell : Aluminum alloy/ Olive drab zinc plated
Insert : Thermoplastics UL94-V0
Contact : 7x #16 Pin contacts (1.5~2.0mm²)
Copper alloy / Silver plated crimp type
GASKET : Rubber

Mechanical data
Operating Temperature: -55 ° C ~ +125 ° C
IP-Class: **IP67**
Durability: 500 cycles

Electrical data:
Test Voltage (Vac rms): 3000V
Rated Current: 13A
Insulation Resistance: 2000 MΩ Min
Contact Resistance: Less than 2.5 milliohms

DIMENSIONS	TOLERANCES	PROJECTION	ORIGINAL FOR CUSTOMER DISTRIBUTION	THIS DOCUMENT CONTAINS PROPRIETARY INFORMATION WHICH IS THE CONFIDENTIAL PROPERTY OF AMPHENOL PCD SHENZHEN	CHKD	APPD	SIZE	DWG NO.	REV
ANSI: Y14.5M UNITS: MM CAD/FILE	X ± 0.5 XX ± 0.10 ANGLES ± 0.5°		ORIGINAL FOR CUSTOMER DISTRIBUTION	THIS DOCUMENT CONTAINS PROPRIETARY INFORMATION WHICH IS THE CONFIDENTIAL PROPERTY OF AMPHENOL PCD SHENZHEN	CHKD	APPD	A3	AS GTC2A 2007 PC	1
Amphenol Pcd Shenzhen			TITLE		Connector Receptacle		20-07 PC		
ENGDR			SCALE		2:1		SHEET 1 OF 1		