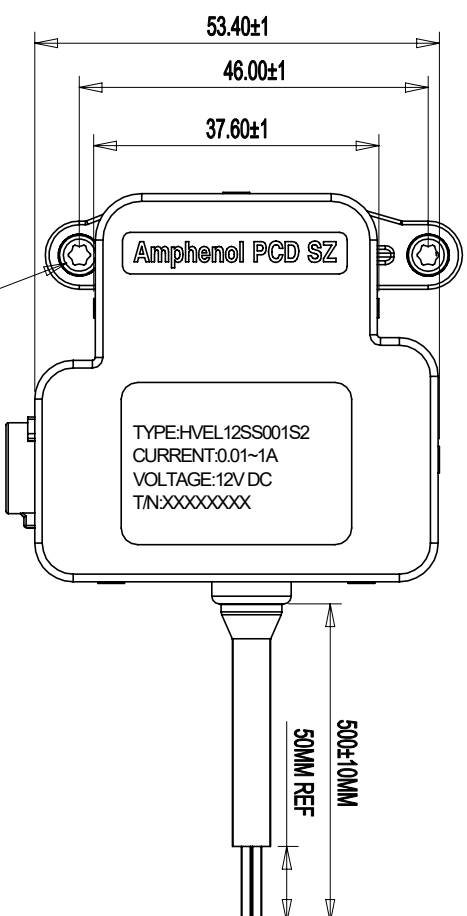
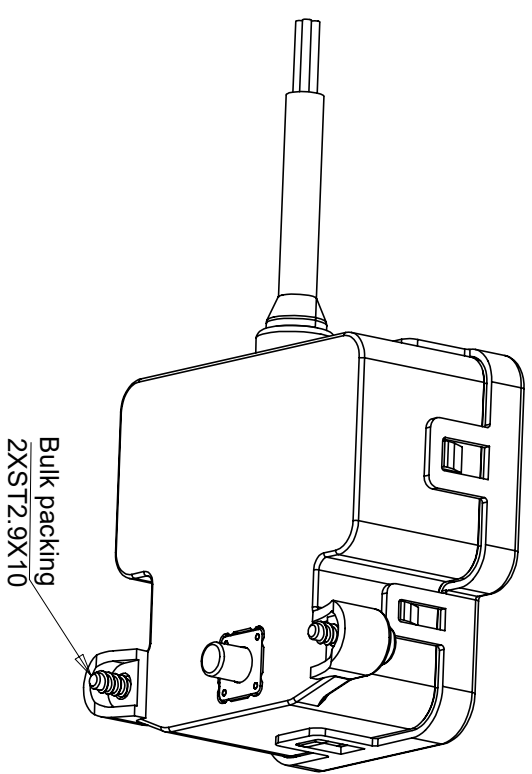


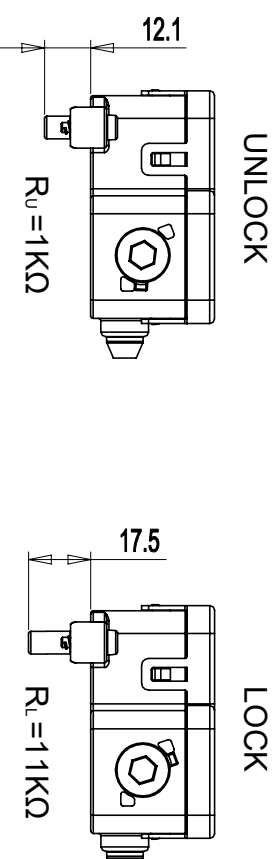
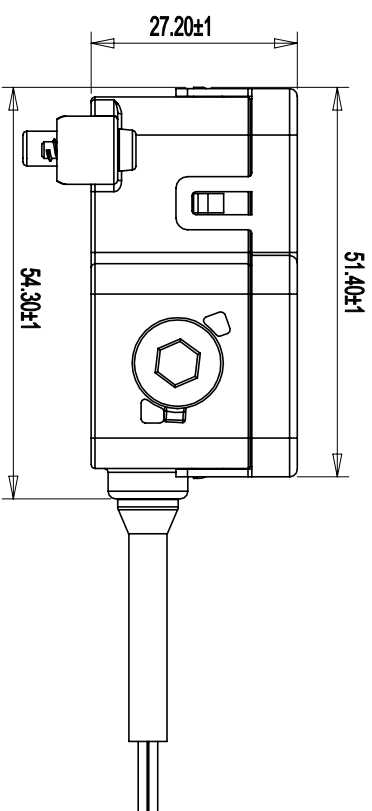
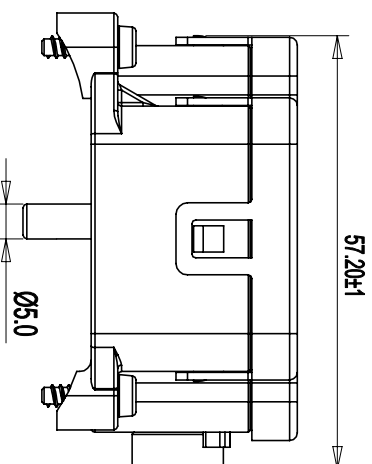
Amphenol PCD SZ
ORIGINAL
PDF Format
R&D

C-HVEL12SS001S2

REV	ECN	DESCRIPTION	DATE	MODIFIED
1		RELEASE	2023.07.04	A.Yu



Recommended Mounting Torque:0.5N.m
2XST2.9X10



Suggested work time:>3000ms
Max time:N/A
Min time:400ms

Suggested adjustment time:600ms
Max time:1000ms
Min time:450ms

Contact switch is normally closed

Unlock: 1KΩ

Lock: 11KΩ

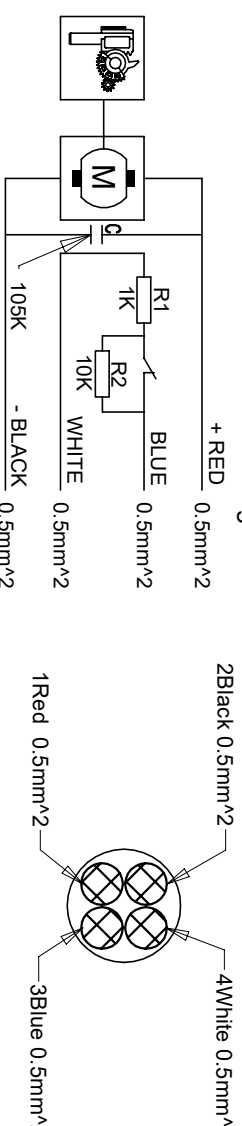
- Voltage supply at motor: 12V
- Possible Voltage supply at motor: 9V~12V
- Typical motor current for locking: 200mA
- Maximal motor current for locking: 1000mA
- Maximal voltage for locking detection: 20V
- Maximal dwell period with blocking current: 1000ms
- Suggested adjustment time: 600ms
- Durability (in load cycles) : >40000
- Ambient temperature (in operation) : -40°C~+85°C
- Ambient temperature (storage) : -40°C~+85°C
- Length of the actuator cables: 500mm
- Minimum bending radius: 30mm
- Specification of the actuator cables: 4 X 0.5mm²
- IP-Class : IP65
- RoHS Compliance

TYPE	RED	BLACK	WHITE	BLUE
UNLOCKING	+	-	SIGNAL(R _u =1KΩ)	
LOCKING	-	+	SIGNAL(R _l =11KΩ)	

DIMENSIONS	TOLERANCES	PROJECTION
ANSI Y14.5M UNITS: MM CAD FILE	X .XX ANGLES ±2°	±0.5 ±0.05 ±2°

Amphenol PCD Shenzhen
ENGR
A.Yu
2023.07.04

DC_12V ELOCK



Emergency unlocking of the 12V locking actuator

Schematic diagram

ORIGINAL

THIS DOCUMENT CONTAINS
PROPRIETARY INFORMATION WHICH
IS THE CONFIDENTIAL PROPERTY
OF Amphenol PCD Shenzhen Co., Ltd
Amphenol PCD Shenzhen Co., Ltd RESERVES
THE RIGHT TO CLARIFY THIS DRAWING

CHKD
APPD
Derek

SIZE	DWG NO.	SCALE	SHEET	REV
A3	C-HVEL12SS001S2	1:1	1 OF 1	1

C-HVEL12SS001S2

C-HVEL12SS001S2

受控文件

2023年7月17日

安费诺精密连接器(深圳)有限公司
Amphenol PCD Shenzhen