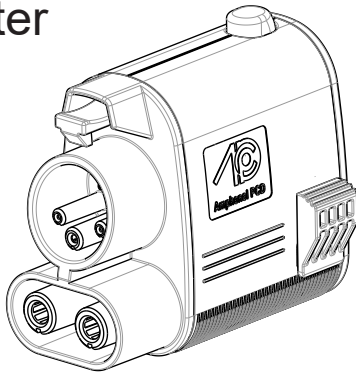


NACS to CCS1

Adapter



User Manual



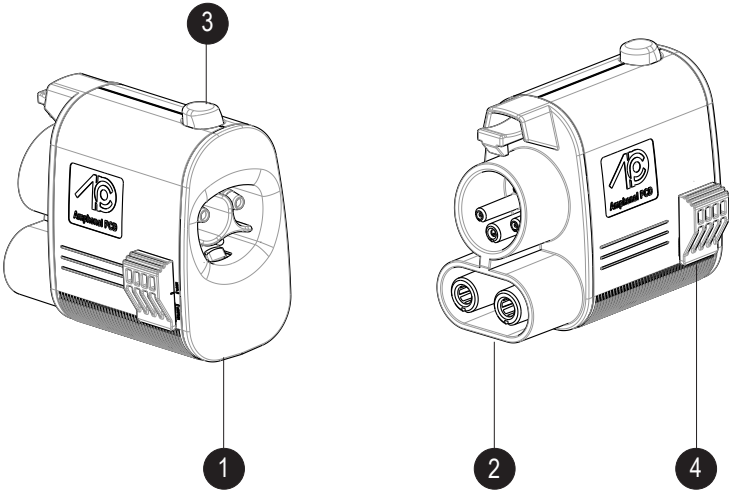
Scan for more



SAE J3400-1

UL2252 compliant

www.amphenolhps.com



- 1. NACS DC end of the adapter to attach to NACS J3400 Charging plug .
- 2. CCS1 end of the adapter to plug into the CCS1 port on the vehicle.
- 3. CCS1 Unlock Button, releases from vehicle.
- 4. NACS Unlock Button, releases from charger.

IMPORTANT SAFETY INSTRUCTIONS



DANGER

Before using the North American Charging Standard (NACS) DC adapter, please read all instructions. Follow the safety instructions and warnings in this guide to reduce the risk of fire, electrical shock or serious injury.

- Use the adapter with NACS J3400 DC Charging Stations. Don't attempt to use the adapter with an AC charger, wall mounted connectors or any other EV charges, can result in vehicle or property damage.
- This adapter is designed only for charging a CCS1 vehicle. Don't use it for any other purpose or with any other vehicle or object.
- Stop charging session before disconnecting.
- Don't use the adapter if it is defective, appears cracked, frayed, broken or otherwise damaged.
- Don't touch the end terminals of the adapter with sharp metallic objects, such as wire, tools or needles.
- Don't attempt to open, disassemble, repair or modify the adapter.
- Protect from moisture, water, and other foreign objects.
- Don't place fingers into the adapter inlets.
- If charging secession is terminated due to Thermalswitch consider to decommission the adapter.
- Don't use solvents to clean the adapter.

Specifications

Compliant with:	UL2252 & SAE J3400-1
Current:	Air cool 380A rated, Liquid cooling 500A@25min 600A@10min boosted mode (Amphenol internal testing)
Rated voltage (I/O):	1000V DC
Thermal switch:	80°C ± 5°C & 90°C ± 5°
Waterproof rating:	Type 3R (mated), IP67 (enclosure)
Operating temperature:	-40 to 105°C
Ambient temperature:	-40 to 40°C
Product type:	NACS to CCS1 adapter DC
Weight:	850g
Materials:	PC / PA66 / Copper

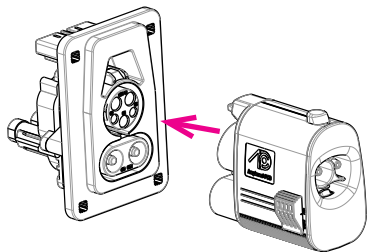
Troubleshooting

If a charging error occurs, check the vehicle central display, or the display on the charging station for information and guidance.

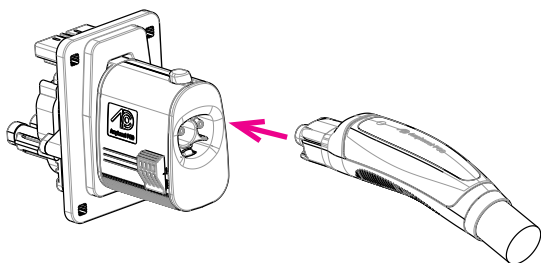
Use the adapter in either way below:

A: Insert the adapter into vehicle's port first.

1. Align the adapter plug with vehicle's charge port, and fully insert the plug into the port.

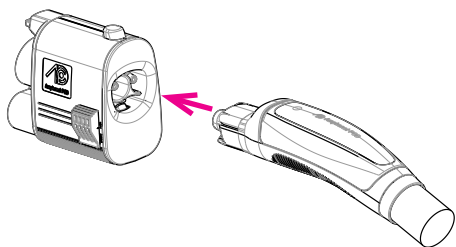


2. Press the NACS J3400 DC Charging cable plug into the NACS end of the adapter until it is fully seated (audible "click").

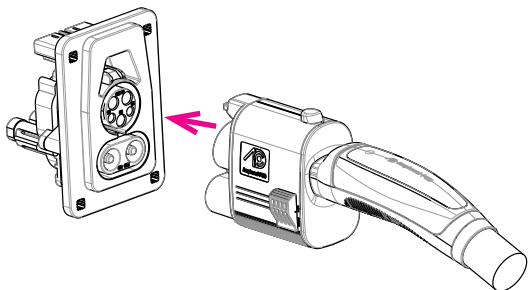


B: Press the plug into adapter first.

1. Press the NACS J3400 DC Charging cable plug into the NACS end of the adapter until it is fully seated (audible "click").



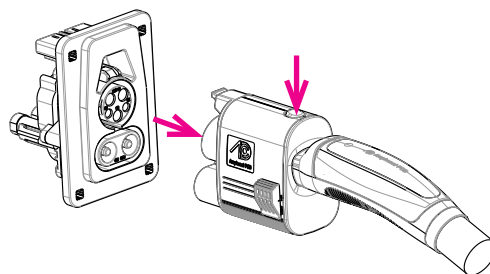
2. Align the adapter plug with vehicle's charge port, and fully insert the plug into the port.



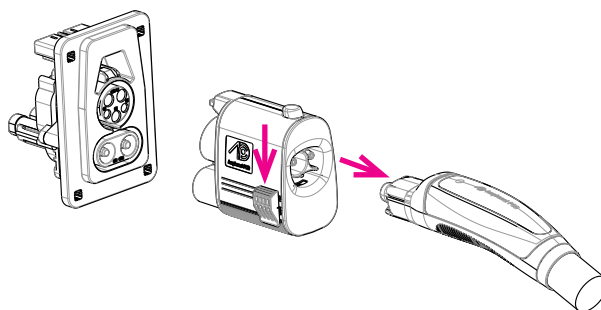
Remove the adapter in either way below:

A: Pull the adapter with plug out of the vehicle first.

1. When charging is complete, remove the plug with adapter from the vehicle with pressing the CCS1 Unlock Button on the top of the adapter.

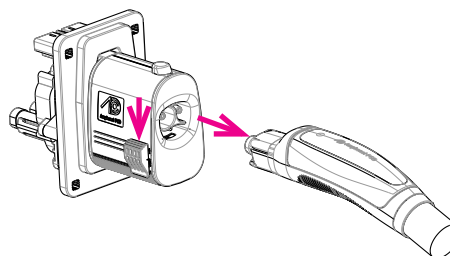


2. Pull the plug out of the adapter with pressing the NACS Unlock Button on the side of the adapter.



B: Pull the plug out of the adapter first.

1. When charging is complete, pull the plug out of the adapter with pressing the NACS Unlock Button on the side of the adapter.



2. Remove the adapter from the vehicle with pressing the CCS1 Unlock Button on the top of the adapter.

